



Officers of the Pine Island Chamber of Commerce are shown following their installation at the organization's second annual dinner Saturday night at the Pine Island Hotel. In front row are the Rt. Rev. Msgr. John S. Felczak, installing officer, and William Pendergast, Orange County Agricultural Agent, who was guest speaker. In back

row, from left, are Sylvester J. Krasniewicz, secretary; Ralph Paffenroth, treasurer; Stanley Schultz, vice president; and Edward Gercazak, Sr., president, receiving the gavel of the office from Past President Alfred M. Roy. Mr. Gercazak, Mr. Schultz and Mr. Paffenroth are also directors. — Dispatch Photo

Orange County mucklands, with rich soil, long growing season, favorable rainfall and temperatures, and closeness to major markets, will play an increasingly important part in the area and national food supply picture. This is the opinion of William Pendergast, Orange County Agricultural Agent, who was guest speaker at the second annual installation dinner of the Pine

Island Chamber of Commerce Saturday night at the Pine Island Hotel. The resourceful mucklands have helped place Orange County in third place in the state in size of farm income, the speaker said, noting that only Suffolk and Wayne Counties are ahead of it. He added that its hard-working, ever-hopeful farm people are tremendously important to the economy, buying a variety of industrial

products, continually reinvesting their money and improving their lands. Contrary to some opinions, the County Agent said, agriculture is not on the way out in the county. Though there are farms here they are larger and more productive, he said. Citrus example in Orange County farming, he noted that the approximately 38,000 cows county now, just about the

as in 1875. The speaker also offered a new concept of farm surpluses with the thought "It is better to have a little more than we need than not enough". He pointed out

vis-
stor
citr
-pr
the
the
S
Ch
ma
dini
Msi
of
inst
fice
ren
plir
acc
two
wor
T
dir
Jr.
rotl
wer
Inc
Roy
fre
Sr.
Sch
ba
lon
nial
oth
and
Kra
lize
ed
dini

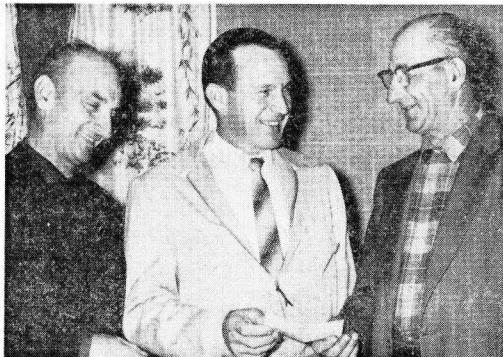


Photo by Walsh

FLYING START — The 1964 Pine Island youth recreation program gets off to a flying start with a gift of \$500, the proceeds of a recent Harvest Festival, from the Pine Island Chamber of Commerce. Sponsors are: (left to right) Sylvester Krasniewicz, festival chairman; Stanley Schultz, director of the recreation program; and Edward Gercazak, chamber president.

Outgoing President Alfred M. Roy noted that all the 67 members of the Chamber are active ones, a big factor in the progress made by the Chamber in its two years of existence. Accomplishments include street lighting, new signs, a community recreation program and a community Christmas lighting contest.

Following Mr. Pendergast's

Judge O'Gorman Speaker For Pine Island Chamber Annual Dinner



County Judge Edward M. O'Gorman addresses members of the Pine Island Chamber of Commerce and their guests at the organization's annual dinner and installation Saturday night at the Pine Island PLAV Hall.

Pine Island is not only noteworthy for its fine agricultural products, but also for independent, self-reliant people who are unusually law-abiding. This view of Pine Island community life was expressed last Saturday night by County Judge Edward M. O'Gorman in an address before the Pine Island Chamber of Commerce. Judge O'Gorman attributed this virtue to the fine family life and guidance which exists. Speaking briefly on the functions of the courts, Judge O'Gorman described them as standing between the individual and government, protecting the individual against unfair taxation. They may also protect a property owner from encroachment by his neighbor, he said. A citizen has the right, Judge O'Gorman said, to expect his courts to properly and impartially manage with adequate facilities to deal with problems in the proper atmosphere. In turn, he can provide grass roots support of proposed improvements and exercise a civic duty through jury service. "Our system of settling disputes in our courts without violence is one of the most important things that distinguishes our Democratic way of life," he concluded. After making his address, Judge O'Gorman was presented with locally grown apples and

Judge O'Gorman was guest speaker, was held in the Polish Legion of American Veterans Hall which makes its facilities available for Chamber meetings and special affairs. Members of the PLAV Auxiliary served the dinner. In a welcoming address, Sylvester J. Krasniewicz, Pine Island Postmaster and Chamber director and secretary, said recent events indicated that Pine Island would continue to be "the vegetable garden of Orange County". He referred to the announcement by the Port Authority that the Pine Island area was not considered feasible for a jetport site. The Rt. Rev. Msgr. John S. Felczak, gave the invocation and benediction and installed the new officers and directors who were presented by retiring President Edward Gercazak, Sr. Mr. Gercazak turned the gavel of office over to the new president, Conrad S. Morgiewicz. Guests introduced by Mr. Morgiewicz were Town Councilman John J. Brodzowski, Jr., Warwick Village Attorney Emil Krasniewicz, Stanley Gorda, recently chosen by the Warwick Junior Chamber of Commerce as Outstanding Young Farmer of the Year, Chief Harry Edsall and Assistant Chief Alex Rogowski of the Pulaski Fire Company and area press representatives. Louis Poloniak was chairman of the dinner.

Others at the head table are, from left, John Wydra, treasurer; Stanley Schultz, vice president; the Rt. Rev. Msgr. John S. Felczak; Sylvester J. Krasniewicz, director and secretary; Edward Gercazak, Sr., retiring president and Conrad S. Morgiewicz, new president.



Mr. Gercazak turns the president's gavel over to Mr. Morgiewicz. — Dispatch Photos

Pine Island Harvest Weekend Includes Farm Tour, Bar-B-Q

The Pine Island Chamber of Commerce will soon sponsor their First Harvest Weekend. On Sat., Aug. 31, a Black Dirt Farm Tour will be conducted. (Rain date, Sept. 7). The Tour will start from the C. Y. O. Youth Center in Pine Island at 10-12 a. m. and 1-3 p. m. Three of the largest farms in Pine Island will be visited: Kosuga's, George Gurda's and Gurda and Gurda, and Ted Sobiech's

Packing House. "Come, Be A Farmer For A Day, be prepared to go out on the black dirt," says the committee. "See the latest methods of harvesting, storing and packaging of vegetables. See a mule train in action. Tickets may be obtained at Warwick - Drew Gulf Pine Island - Roy Brothers and Jolly Onton Inn, Greenwood Lake - Mrs. William

Armstrong. And at the C. Y. O. Center the day of it. On Sun., Sept. 1, rain a Chicken Barbecue will be at Kosuga's Cold Store. Barbecue to be served at 2:00. The King will be crowned. The proceeds of the weekend will benefit the Recreation Program sponsored by the Pine Island Chamber of Commerce.

Black Dirt Tour - Barbecue Planned



Discussing plans for the forthcoming Chicken Barbecue and Black Dirt Tour, to be sponsored by the Pine Island Chamber of Commerce, are these members of the barbecue-tour committee. Seated, left, Sylvester Krasniewicz, committee chairman, Mrs. Helen Yungman and Mrs. Ann B. Standing; Conrad Morgiewicz, Stanley Schultz, Chamber President, Edward Gercazak, and Al tours are planned for Sat., Aug. 31, with the barbecue the following day, Sun., Sept. 1. The tour visitors a chance to see harvest operations on the famous black dirt lands traveling by bus and planning committee met last Wednesday evening at the Jolly Onton Inn to further plans. — Dispatch

WARWICK valley DISPATCH JANUARY 15, 1964